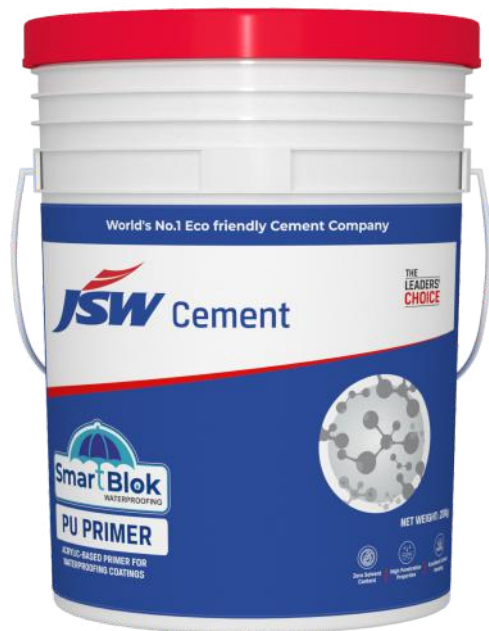




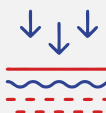
WATER PROOFING



Features



Zero Solvent Content



High Penetration Properties



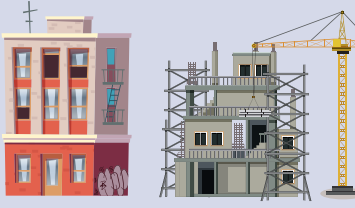
Excellent Surface Wetting

JSW SMARTBLOK PU PRIMER

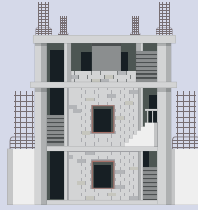
Acrylic-based Primer for Waterproofing Coatings

AREAS OF APPLICATION

JSW SmartBlok PU Elasto Prime is a single-component ready-to-use primer for acrylic as well as PU hybrid coatings. JSW SmartBlok PU Elasto Prime fills up the micropores as well as improves the adhesion of the subsequent coating.



New & existing buildings work



New concrete, masonry & plaster surface

3 BENEFITS

- Zero Solvent Content
- High Penetration Properties
- Excellent Surface Bonding

DOSAGE

- Rate of application 10-12 Sqm/Kg.

BEST BEFORE

- 12 months

TECHNICAL SPECIFICATIONS

Description	Results
Appearance	Liquid
Color	Milky White
Specific Gravity	1.02 + 0.05

COVERAGE

- Unpainted surfaces should be primed with JSW SmartBlok PU primer which should be applied at the rate of 10-12 Sqm per kg.

PACK SIZE

20 kg



JSW Cement

World's No.1 Eco Friendly Cement Company

MARKETED BY: **JSW Green Cement Pvt. Ltd.**
Babukhan Millenium Centre, 6-3-1099/1100, No. 702, Block-A, Somajiguda, Hyderabad,
Telangana, India, Pincode - 500 082.

Email: info@jswcement.in | **Website:** www.jswcement.in | **Toll free -** 18002662661

SCAN HERE FOR TDS



SCAN HERE



SMARTBLOK PU PRIMER

WATER PROOFING