



WATER PROOFING



Features



Suitable for application even on damp surfaces



Increases the bonding strength between the surface & waterproofing coating.

SMARTBLOK WB EP PRIMER

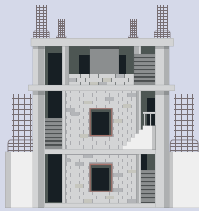
Epoxy resin based primer for concrete

AREAS OF APPLICATION

SMARTBLOK WB EP PRIMER is a two-component epoxy based primer with good penetrating properties for concrete surfaces. It is ideal for priming concrete surfaces prior to the application of any of the resin based floor toppings protective coatings or epoxy repair mortars.



Concrete & Screed



New concrete, masonry & plaster surface

4 BENEFITS

- Ease of application (roller or brush)
- Excellent anchoring to absorbent and non-absorbent surfaces.
- Can be applied on moist surfaces, without loss of adhesion.
- Can be diluted with water.

DOSAGE

- Approx Coverage 10 Sqm/Litre

BEST BEFORE

- 12 months

TECHNICAL SPECIFICATIONS

Description	Results
Pot life at 20°C	90 Minutes
Pot life at 30°C	30 Minutes

COVERAGE

- Approximate coverage rate Approx. 10 Sq.mt per litre

PACK SIZE

15Kg (Part A 10 Kg & Part B 5 Kg)



World's No.1 Eco Friendly Cement Company



MARKETED BY: **JSW Green Cement Pvt. Ltd.**
Babukhan Millenium Centre, 6-3-1099/1100, No. 702, Block-A, Somajiguda, Hyderabad,
Telangana, India, Pincode - 500 082.

Email: info@jswcement.in | Website: www.jswcement.in | Toll free - 18002662661

SCAN HERE FOR TDS



SCAN HERE



SMARTBLOK WB EP PRIMER

WATER PROOFING