



CONCREEL HD RAKSHA

SMART STRENGTH. SPEEDIER CONSTRUCTION.
Engineered for faster builds and dependable performance.



HOW IT WORKS:

JSW CHD Raksha is a high-performance cement engineered for superior compressive strength and structural stability.

It is specially formulated to enhance bonding strength and optimize concrete microstructure. This improves density, reduces shrinkage, and enhances load-bearing capacity.

ADVANCED COMPOSITION

- Generates higher compressive strength
- Controls heat of hydration
- Minimizes internal stress
- Reduces permeability
- Enhances long-term structural integrity

This ensures concrete that performs consistently under structural load and environmental stress.

WHY CHD RAKSHA?



Ultimate Compressive Strength

Delivers unmatched load-bearing capacity for structural elements.



Vigorous Bond Strength

Ensures strong adhesion between aggregates and cement matrix.



Crack-Resistant Formulation

Minimizes shrinkage and surface cracking.



Low Heat of Hydration

Reduces thermal stress in mass concrete applications.



Optimized Microstructure

Improves density and lowers permeability.



Longer Structural Life

Built to deliver durability across generations.



Sustainable & Eco-Conscious

Supports responsible and green construction practices.

PERFORMANCE COMPARISON

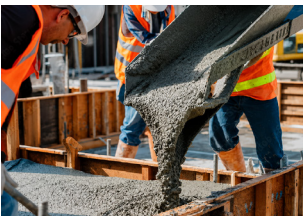
STRUCTURAL PERFORMANCE ADVANTAGE

CHD Raksha is engineered to deliver superior structural performance compared to conventional cement.

Performance Parameter	CHD Raksha	Conventional Cement
Compressive Strength	Higher	Standard
Bond Strength	Enhanced	Moderate
Shrinkage Control	Improved	Standard
Heat of Hydration	Controlled	Higher
Structural Durability	Long-Term	Moderate

Ideal Applications:

Perfect for structural applications demanding high performance.



Roof slabs



Beams and columns



Heavy-load foundations



Structural RCC works



Premium residential buildings



Infrastructure that grows stronger with time



WHY CHOOSE JSW CEMENT?

JSW Cement gives you strength that lasts and sustainability that matters.

India's **No.1 Eco-Friendly Cement** company and a leader in responsible construction, JSW Cement combines advanced technology with green manufacturing practices.

With a grinding capacity of 24.1 MTPA and clinker capacity of 9.74 MTPA, JSW Cement continues to build stronger, responsibly.

Customer Care:

Toll-Free: 1800-266-2661

Website: www.jswcement.in

Email: info@jswcement.in

 **JSW** Cement
Start Strong. Grow Stronger.

World's #1
eco-friendly
cement company