

Compliance Report

Name of Project	:	4.0 MTPA Slag Grinding and Mixing Unit
Clearance Letter No.	:	F. No. IA-J-11011/540/2017-IA-II(I)
Period of Compliance Report	:	Apr - 23 to Sep - 23

Compliance report of conditions stipulated in the Environment clearance

1. ENVIRONMENT CLEARANCE NO J-11011/540/2017-IA II (I) dated 01.02.2018

A. Specific Conditions

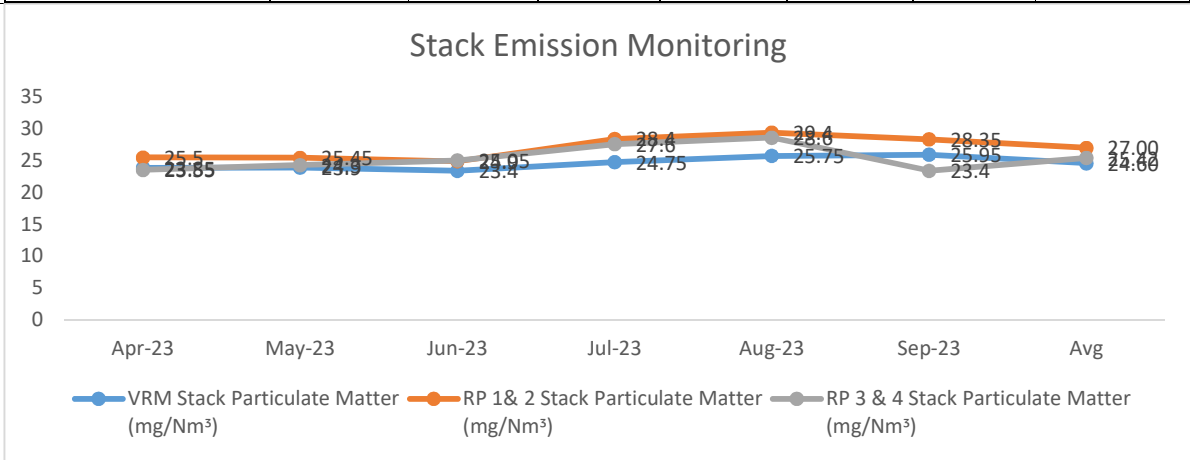
S.N.	CONDITIONS	COMPLIANCE STATUS
i	The project proponent should install 24x7 air and water monitoring device to monitor air emission and effluent discharge, as provide by CPCB and submit report to ministry and its regional office.	<p>Unit have installed on line continuous stack emission-monitoring system at VRM bag house stack, RP mill 1&2, RP 3&4 bag house stack and connected to SPCB/CPCB Servers.</p> <p>No effluents generated from our cement manufacturing process.</p> <p>Stack emission & AAQM monitoring report is being regularly submitted to KSPCB regional office Bellary on monthly basis. Environment monitoring reports are also being submitted to CPCB Bengaluru and MoEF&CC every six month as part of EC Compliance report.</p> <p>Stack emission & ambient air quality monitoring reports attached along with EC compliance status report for last six Month for the period Apr-23 to Sep-23.</p>
ii	All the conditions stipulated by the standing committee of the National Board for wild life should be effectively implemented.	The EC has been transferred from JSW Steel Limited, the parent company to JSW Cement Limited. Implementation of Wildlife Conservation plan is being undertaken by JSW Steel limited and regular compliance status is being submitted to MoEF&CC by JSW Steel.
iii	The PP shall participate in a Wildlife Conservation Plan for Sloth Bears and other Schedule-I fauna found	The EC has been transferred from JSW Steel Limited, the parent company to JSW

	<p>in the study area and in the Daroji Bear Sanctuary. The Conservation Plan shall be prepared in consultation with the State Wildlife Department. The Plan with various activities including creation of water bodies, elimination of weeds, eco-regeneration plan including regeneration of fruit bearing trees and improvement of ecological habitat and support to the nearby villages to minimize dependency on forest produce for fuel shall contain budgetary support with details of capital and revenue costs for various activities, the details of expenditure made on which shall be regularly submitted as part of the Compliance Report to Regional Office, Bangalore</p>	<p>Cement Limited. Implementation of Wildlife Conservation plan is being undertaken by JSW Steel limited and regular compliance status is being submitted to MoEF&CC by JSW Steel.</p>
iv	<p>The PP shall obtain assured raw materials (particularly Blast Furnace slag, Clinker and coal) from designated sources for long-term supply and shall enter into long-term MOUs with producers/setters of raw materials used, Washed coal shall be used</p>	<p>We have already done MOU with suppliers for long term supply of raw materials such as blast furnace slag, Clinker, Gypsum, Fly ash & Coal.</p>
v	<p>All the units of the expansion project shall operate using state-of-art energy efficient technologies, environmental pollution prevention and control technologies and energy efficient measures including the 4Rs shall be implemented at every step of the plant operation.</p>	<p>All the units of JSW Cement's expansion project are operating using state-of-art energy efficient technologies, environmental pollution prevention and control technologies and energy efficient measures including the 4Rs.</p>
vi	<p>On-line ambient air quality monitoring and continuous stack monitoring facilities for all the stacks shall be provided and sufficient air pollution control devices viz, Electrostatic precipitator (ESP) and bag filters etc. shall be provided to keep the emission levels of particulates below 50 mg/Nrn³ from stacks and also meet level of the 50 µg/ m³ in work zone.</p>	<p>JSW Cement Limited is located within the premises of JSW Steel limited. 05 nos. of On line continuous ambient air quality monitoring stations (CAAQMS) are installed in JSW Steel complex for monitoring of ambient air quality and online realtime data are transmitted to CPCB</p> <p>Unit have provided 03 Nos of Bag house VRM & RP mills to control the emission level below 30 mg/Nm³.</p> <p>Unit have also provided 107 nos of bag filters at all material transfer points to control fugitive dust emission. As stated above unit have installed on line continuous stack emission monitoring system at Vertical roller mill bag house stack ,RP-1&2, RP-3&4 Bag house stack and OCEMS have been connected to CPCB/SPCB servers and data are being continuously uploaded to CPCB/SPCB servers.</p> <p>The Emission monitoring is being done on regular basis to check the effectiveness of installed APCD and average ranges of</p>


monitoring results are in mg/Nm³ given below in tabular form: (Apr'23 to Sep'23)



Stack	Apr-23	May-23	Jun-23	Jul-23	Aug-23	Sep-23	Avg
VRM Stack	23.85	23.9	23.4	24.75	25.75	25.95	24.60
RP 1 & 2 Stack	25.5	25.45	24.9	28.4	29.4	28.35	27.00
RP 3 & 4 Stack	23.55	24.3	25.05	27.6	28.6	23.4	25.42



vii	<p>Air Pollution control measures shall include Pulse Jet Bag Filter & DSS in yards. Vents in storage tanks</p>	<p>Unit have provided best in class Air pollution control equipment's i.e. pulse jet type bag filters in VRM & Roller press mill 1 & 2 & Roller Press mill 3 & 4, which are designed to keep the dust emission well below the prescribed norms.</p> <p>To keep the fugitive emission within control and keep the ambient air quality as per the norms unit have also provided 107 no. pulse jet bag filters at all the transfer points where material movement takes.</p> <p>Regular water spraying is done in raw material yards.</p>
-----	---	--

		Unit have provided vents in all the storage silo to avoid silo failures due to pressurization of the same and also provided bag filters on silo tops for venting.
		
viii	In-plant control measures like bag filters, de-dusting and dust suppression system shall be provided to control fugitive emissions from all the vulnerable sources. Water sprinkling system shall be provided to control secondary fugitive dust emissions generated during screening, loading, unloading, handling and storage of raw materials etc.	Unit have provided De-dusting Bag filters are provided at all the material transfer points to control fugitive emissions and also unit is regularly doing preventive/scheduled maintenance of Air pollution control equipment's to ensure proper functioning of the same. Regular water sprinkling is done in all dust prone areas to control fugitive dust emission.
ix	Gaseous emission levels including secondary fugitive emissions from all the sources shall be controlled within the latest permissible limits issued by the Ministry vide G.S.R. 414(E) dated 30th May, 2008 and regularly monitored. Guidelines / Code of Practice issued by the CPCB shall be followed	Not applicable for cement plants as the GSR 414(E) dated 30 th May 2008 is having permissible limits for Sponge Iron Plant.
x	The plant shall develop rail track for conveying slag from JSW Steel to JSW Cement.	Rail track developed for transportation of slag from JSW Steel to JSW Cement plant.
xi	Detailed unit-wise Risk Analysis and Assessment and detailed on-site and off-site Emergency Preparedness and Disaster Management Plan (DIP) linked to District-level IJMF shall be prepared in consultation with	Unit wise risk analysis and its Assessment details, on-site and off-site plan already prepared and report submitted to Department of factories Bellary. Mock drills are carried out periodically

	district authorities and mock drills carried out periodically	
xii	Proper handling, storage, utilization and disposal of all the solid waste shall be ensured and regular report regarding toxic metal content in the waste material and its composition, end use of solid/hazardous waste shall be submitted to the Ministry's Regional Office at Bangalore, SP CB and CPCB.	Unit is not generated any type of solid waste from its operations. Hazardous waste generated from the unit is used oil/grease and empty barrels same is being sold to registered recyclers, details of hazardous waste generated/transported/ disposal through sold to registered recyclers is being submitted to SPCB in Form-X & Form-IV in compliance to Hazardous & other Waste (Management & Transboundary Movement) Rules,2016.
xiii	BF Slag shall be used for cement making	Being pioneer in the green cement manufacturing unit is consuming BF slag for the manufacturing of PSC, Composite cement & GGBS. Unit is giving thrust for maximum utilization of blast furnace slag in cement manufacturing.
xiv	Total water requirement for the facility shall be provided from JSW Steel Ltd, and shall not exceed 565 m ³ /day. The blow down from the system shall be used for greenbelt development. The effluent from domestic sources shall also be used for green belt development after treatment in septic tank and soaking pits. No effluent shall be discharged outside the factory premises, "Zero Liquid Discharge" shall be followed strictly as proposed	Water for the unit is provided by JSW Steel Limited. Average daily water consumption for past six months, i.e. during Apr'2023 to Sep'2023 is 279 m ³ /day. Domestic waste water is being used for greenbelt development after proper treatment. Unit is maintaining Zero liquid discharge (ZLD) Status.
xv	The proponent shall adopt water conservation measures to reduce requirement of make-up water. The wastewater generated from the indirect cooling circuit shall be routed through the cooling tower, The domestic wastewater shall be treated in a Sewage Treatments plant (STP) and used for dust suppression and green belt development	Unit have implemented rooftop rain water harvesting in our plant for conservation of rain water. Domestic wastewater generated from the plant premises is less than 42 KLD and it is being treated in State of Art Technology STP having 60 KLD capacity, treated domestic effluent is being utilized for dust suppression and green belt development within plant premises.

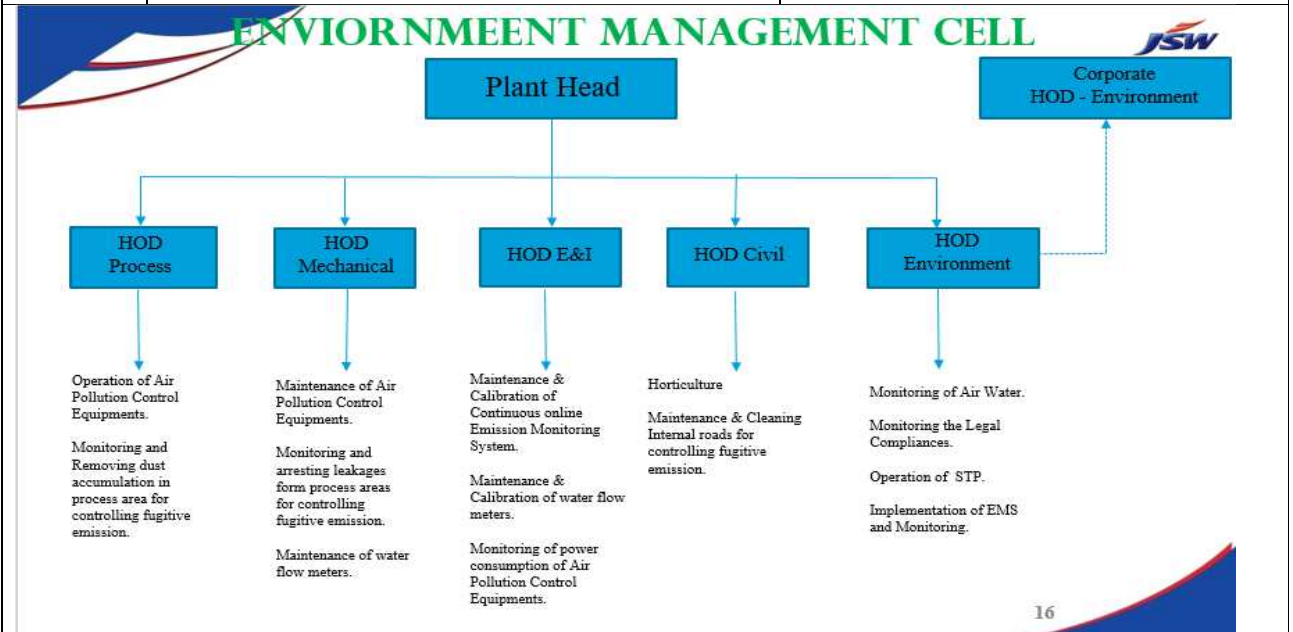


xvi	Efforts shall further be made to use maximum water from the rain water harvesting sources to reduce intake of water from Almatti and Tungabhadra Dam. If needed, capacity of the reservoir shall be enhanced to meet the maximum water requirement. Only balance water requirement shall be met from other sources.	Reservoir pond already constructed in the premises of JSW Steel Limited for collection of rain water. We are using the harvested water for plantation/ horticulture purpose.
xvii	Regular monitoring of influent and effluent surface, sub-surface and ground water shall be ensured and treated wastewater shall meet the norms prescribed by the State Pollution Control Board or described under the E(P) Act whichever are more stringent. Leachate study for the effluents generated and analysis shall also be regularly carried out and report submitted to the Ministry's Regional Office at Bangalore, SPCB and CPCB	Unit is not generating any trade effluent , domestic effluent generated from the plant premises is being treated in state of art technology sewage treatment plant having capacity to treated 60 KLD, treated domestic water is being utilized in dust suppression/green belt development
xix	Green belt shall be developed in 33% of plant area. Selection of plant species shall be as per the CPCB guidelines in consultation with the DFO	Unit have developed green belt as per the CPCB guidelines and till date unit have covered 23% and reaming area will be covered under tree plantation by 2025. Unit have planted (Apr'23 to Sep'23) 4325 nos of plants in the plant premises, year wise plantation details is as mentioned below



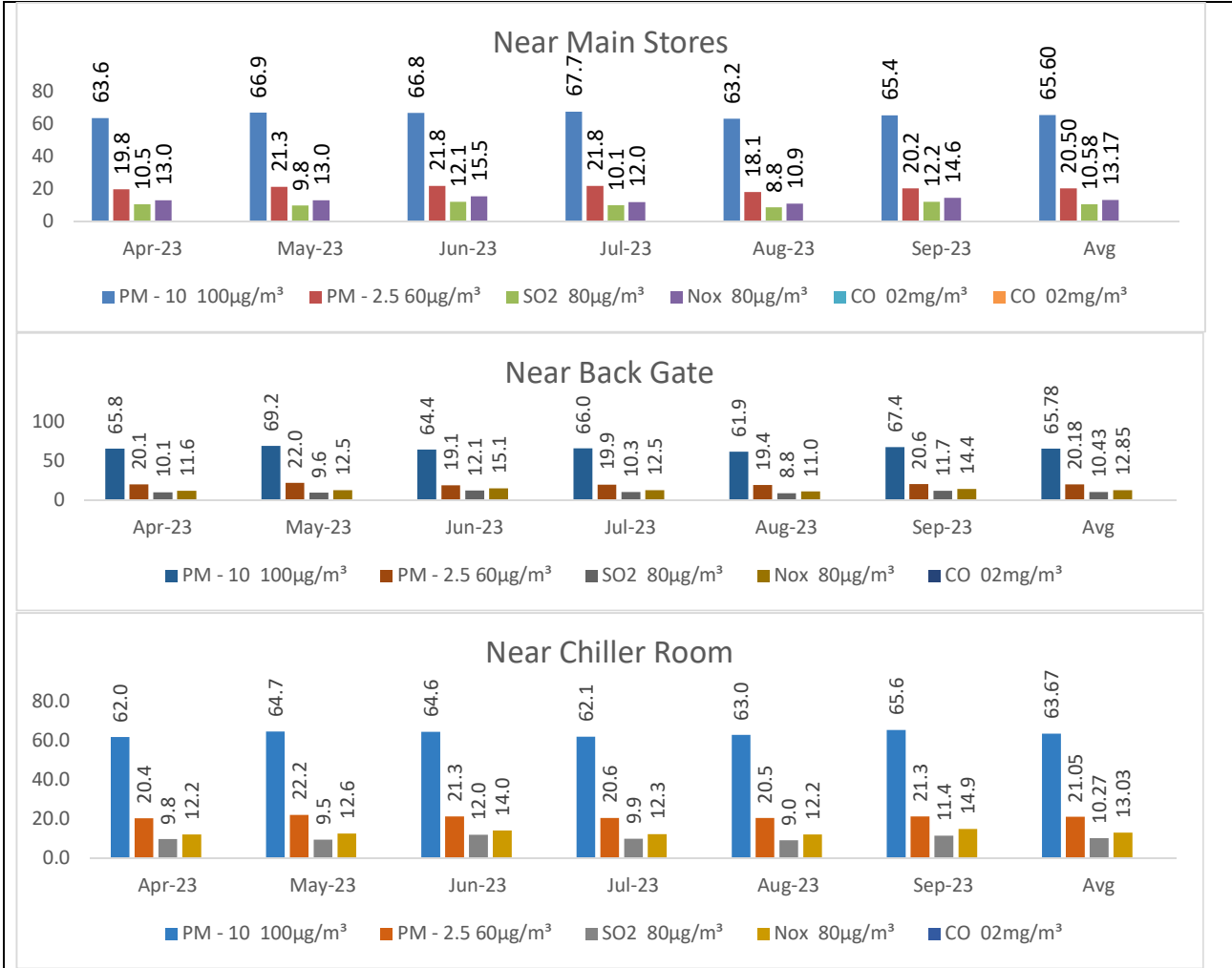
<p>xx</p>	<p>The entire power requirement shall be met from the Captive Power Plant [Existing Gas based (100 MW -130 MW); 2x300 MW (coal based 50% Indian coal and 50% Imported Coal); proposed 660 MW(super critical) J of 1490 VW of M/s JSW Steel Limited</p>	<p>The entire Power requirement is met from JSW Energy Limited. Formerly power plant was under M/S JSW Steel Limited & it is being transferred to M/S JSW Energy Limited.</p>
<p>xxi</p>	<p>The environment wing of the company and for this Plant as well as of the company shall be strengthened with qualified personnel, state-of art laboratory, infrastructure, etc and regular records of the environmental data including on-line monitoring-of emissions shall be maintained.</p>	<p>JSW Cement Limited, Vijayanagar has established an Environment Management Cell which is responsible for day to day environment and pollution monitoring activities. Air, Noise and Water quality monitoring is carried through NABL accredited laboratory and the monitoring reports are submitted on monthly basis to Regional KSPCB office.</p> <p>The Environmental Management cell also co-ordinates with all the related activities such as checking of performance of pollution control equipment installed in</p>

		<p>plant, Sewage treatment plant, and green belt development.</p> <p>Environment cell is maintaining all the records of the environment data inclusive of online monitoring of ambient air quality and stack emission.</p>
--	--	--

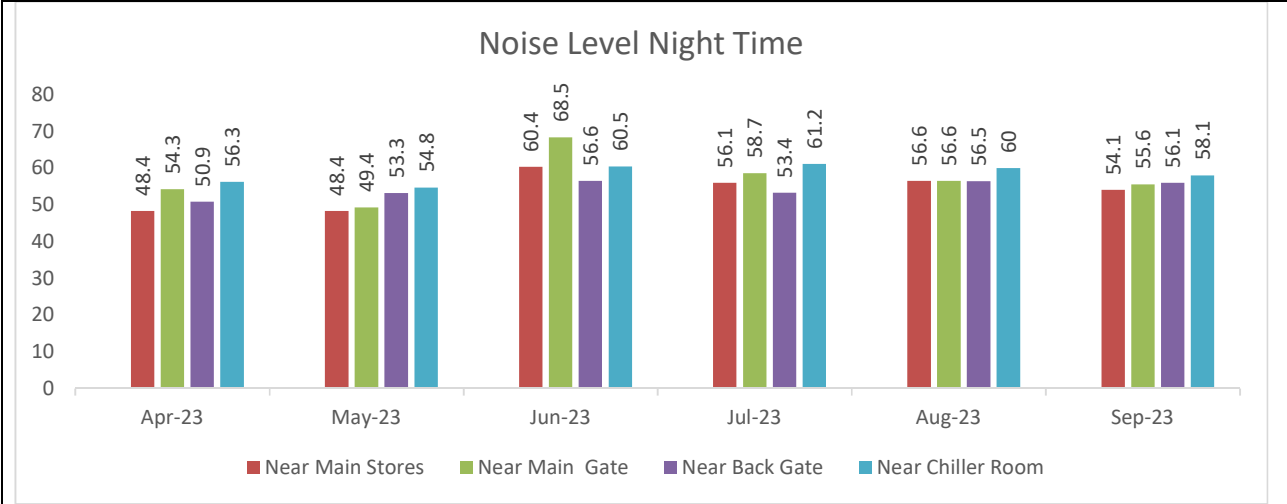
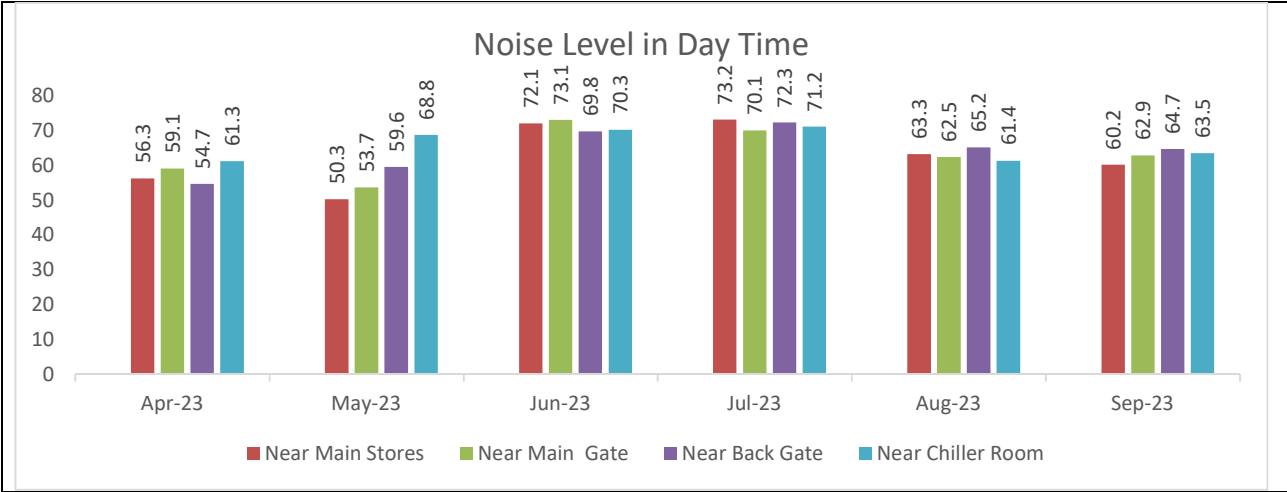


<p style="text-align: center;">xxii</p>	<p>Company shall develop an HSE Policy. All the permanent workers shall be covered under ESI Scheme. The company shall have the provision for treatment of its workers at the local sub-committee Nursing Homes & Hospitals in case of emergency. Annual Medical Check-up on some medical parameters like Blood test, Chest X-Ray, Eye test_ Audiometry, Spirometry etc. shall be regularly conducted amongst the employees of the Company and records maintained thereof</p>	<p>JSW Cement Limited has HSE Policy in place. All permanent works are covered under ESI scheme and health insurance policy. JSW steel limited, Vijayanagar is having multi super specialty hospital for providing medical treatment to all the employees, worker & nearby villagers. Annual medical check-up for the prescribed parameters is regularly conducted and the records are maintained.</p>
<p style="text-align: center;">xxiii</p>	<p>A CSR Plan shall be prepared and implemented in consultation with the local villages and administration. Issues raised/covered during public hearing and incorporated in the EMP and CSR Plan. During construction phase of the expansion project, an expenditure of about minimum 5% of the capital expenditure shall be earmarked for CSR activity covering the broad areas of education, health, infrastructure, water and power spread over 5 years/period of construction of project. During operation phase of the project, the CSR activity will be funded based on 2% of the profit during operation phase of the project. 70% of the employment shall be made from_ the local population, The activities. shall include skill development, education for the girl child,</p>	<p>Implementation of Enterprise Social Responsibility and CSR Shall be the responsibility of JSW Steel Limited, the parent company as per point no. 8 of letter No. F. No. J-11011/489/2009-IA-II(I), dated 22/01/2018. JSW Steel limited is submitting regular reports related to CSR to the Ministry.</p> <p>Further to that Unit is also carrying out CSR activities nearby villages and schools.</p>

	<p>common infrastructure, alternate livelihood schemes and creation of SHGs, etc. The PP shall as part of the CSR Plan meet the drinking water requirements (pipeline) of neighboring villages from the State authorities. In addition, villages such as Dharmasagara and Bandri, which have a fluoride problem shall also be provided drinking water. All the commitments made to the public during the Public Hearing/Public Consultation meeting held on 05.10.2010 shall be satisfactorily implemented and details of which shall be furnished as part of CSR. A separate budget for implementing the same shall be allocated made. The annual capital and recurring expenditure on CSR - village-wise and activity-wise shall be uploaded on the company website and also included in the Annual Report of the company to the Ministry's Regional Office at Bangalore.</p>	
xxiv	<p>The Company shall submit within three months its policy towards Corporate Environment Responsibility which shall inter-alia address (i) Standard operating process/ procedure to being into focus a infringement/deviation/violation of environmental or forest norms/conditions, (ii) Hierarchical system or Administrative order of the Company to deal with environmental issues and ensuring compliance to the environmental clearance conditions and (iii) System of reporting of noncompliance/violation environmental norms to the Board of Directors of the company and/or stakeholders or shareholders</p>	<p>Unit have have submitted Corporate Environment Responsibility Policy to MoEF&CC regional office, Bengaluru vide our letter no. JSWCL/ENV/ MoEF /2017-18 on dated 05.03.2018.</p> <p>Company's latest and revised policy towards Corporate Environment Responsibility is as mentioned below</p>
xxv	<p>Provision shall be made for the housing of construction labor within the site with all necessary infrastructure and facilities such as fuel for cooking, mobile toilets, mobile STP, Safe drinking water, medical health care, creche etc. The housing may be in the form of temporary structures to be removed after the completion of the project.</p>	<p>All necessary infrastructure / facility was provided to construction labor during construction phase of the project and also removed temporary houses after completion of the project.</p>
	GENERAL CONDITIONS	
i	<p>No further expansion or modifications in the plant shall be carried out without prior approval of the Ministry of Environment, Forest and Climate Change (MoEFCC).</p>	<p>Noted and will be complied.</p>
ii	<p>At least four ambient air quality monitoring stations should be established in the downward direction as well as where maximum ground level concentration of PM10, PM2,5, SO2 and NOx are anticipated in consultation with the SPCB. Data on ambient air quality and stack emission shall be regularly submitted to this Ministry including its Regional Office at Bangalore and the SPCB/CPCB once in six months</p>	<p>Regular ambient air quality monitoring is being carried out by NABL accredited laboratory and the monitoring reports are submitted monthly basis to Regional KSPCB office.</p> <p>Data are also regularly submitted to CPCB & MoEF&CC once in six months. Six monthly AAQM and Stack emission data are as tabulated below</p>



<p>iii</p>	<p>Industrial wastewater shall be properly collected, treated so as to conform to the standards prescribed under GSR 422 (E) dated 19th May, 1993 and 31st December, 1993 or as amended from time to time. The treated wastewater shall be utilized for plantation purpose.</p>	<p>No industrial wastewater is generated from our cement manufacturing process.</p>
<p>iv</p>	<p>The overall noise levels in and around the plant area shall be kept well within the standards (85 dB A) by providing noise control measures including acoustic hoods, silencers, enclosures etc. on all sources of noise generation. The ambient noise levels should conform to the standards prescribed under EPA Rules, 1989 viz, 75 dBA (daytime) and 70 dBA (nighttime).</p>	<p>Noise level are maintained within prescribed norms. Unit have provided Enclosures at plant equipment's; regular maintenance of plant machineries is being carried as per the preventive maintenance schedule to reduce the noise level.</p> <p>Regular ambient noise level monitoring around the plant is being carried out and monitoring results are regularly submitted to KSPCB on monthly basis. Six monthly noise level data are as tabulated below</p>



v	<p>Vehicular transportation of raw materials and finished products shall be kept to minimum. Dust suppression systems shall be in place at transfer points. All internal roads shall be black topped. The roads shall be regularly cleaned with mechanical sweepers. A 3-tier avenue plantation using native species shall be developed along the roads.</p>	<p>Unit have provided dust suppression systems in at various material handling area's. roads inside the plant area are paved and tree plantation is being carried out along the road sides.</p> <p>Road sweeping is being done regularly with the help of mechanical road sweeping machines.</p> <p>107 nos. of bag filters are provided at all transfer points where material movement takes place to control fugitive emission.</p>
----------	--	---



vi

Requisite funds shall be earmarked towards capital cost and recurring cost/annum for environment pollution control measures to implement the conditions stipulated by the Ministry of Environment, Forest and Climate Change (MoEF&CC) as well as the State Government. An implementation schedule for implementing all the conditions stipulated herein shall be submitted to the Regional Office of the Ministry at Bangalore. The funds so provided shall not be diverted for any other purpose


JSW Cement Limited has incurred INR 31.69 Crore as Capital expenditure and INR 131.5 Lakh as recurring expenditure on pollution control measures up to April to September 2023. Capital cost & Recurring cost incurred on Pollution control measures is as mentioned below

CAPITAL COST INVESTMENT ON POLLUTION CONTROL MEASURES UP TO 31st March 2020					
Sl. No	Description	Qty	Unit Rate	Total in Lakhs	Total in Crores
Air Pollution control measures in RP mill area					
a	Bag House RP mill area	4	19679100	78716400	7.87
b	Bag Filter (KHD)	2	7690400	15380800	1.54
c	Bag Filter (Rieco)	1	5200000	5200000	0.52
d	Beumer	1	500000	500000	0.05
e	Silo extraction & packing plant	1	12012000	12012000	1.20
f	On line Stack dust monitor system	2	451350	902700	0.09
Total Cost					11.27
Air Pollution control measures in VRM area					
a	VRM Bag house cost	1	38616440	38616440	3.86
b	Packing plant bag filters CEMPPBF024	4	1160078	4640312	0.46
c	Reject building bag filter	2	920114	1840228	0.18
d	Feed group Bag filter	5	2735902	13679510	1.37
e	Bag filter transfer point	2	547070	1094140	0.11
f	On line Stack dust monitor system	1	1001596	1001596	0.10
Total Cost					6.09
Expenditure on belt covering, material storage sheds (Fugitive emission control measures)					
a	CSP Sheds (Tones)	265	66000	17490000	1.75
b	Gypsum Sheds (Tones)	550	66000	36300000	3.63
c	Belt Conveyor shed (Tones)	620	66000	40920000	4.09
Total Cost					9.47
STP (Sewage Treatment Plant) 60 KLD			2068776	2068776	0.21
Rain water harvesting			500000	500000	0.05
Paving /concreting of internal roads (Fugitive emission control measures)			41000000	41000000	4.10
Environment monitoring equipment's			552000	552000	0.06
Green belt development			4500000	4500000	0.45
Total Cost					4.86
Grand Total Cost on Environment					31.69

RECCURING COST INVESTMENT ON POLLUTION CONTROL MEASURES FROM Apr-2023 TO September-2023

Sl. No	Description	Amount in Lakhs
1	Afforestation	15.0
2	Environment Monitoring	9.0
General Environment Management		
3	Bag Filter & Bag House Maintenance	85.0
4	STP Operation & Maintenance	8.0
5	STP Power Consumption	5.5
6	Environmental Awareness	3.0
7	Water Tanker for Sprinkling	6.0
Total		107.5
Grand Total		131.5

vii	A copy of clearance letter shall be sent by the proponent to concerned Panchayat, ZilaParishad/Municipal Corporation, Urban Local Body and the local NGO, if any, from whom suggestions/representations, if any, were received while processing the proposal. The clearance letter	EC receipt intimation was given to all the concerned authorities. EC letter is uploaded on our company website. http://www.jswcement.in/wp-content/uploads/EC-Transfer-4.0-MTPA-Cement-Vijayanagar.pdf
------------	--	---

	shall also be put. on the web site of the company by the proponent	
viii	<p>The project proponent shall upload the status of compliance of the stipulated environment clearance conditions, including results of monitored data on their website and shall update the same periodically. It shall simultaneously be sent to the Regional Office of the MOEFCC at Bangalore. The respective Zonal Office of CPCB and the SPCB, The criteria pollutant levels namely; PMIO S02,NOx (ambient levels as well as stack emissions) or critical sectoral parameters, indicated for the projects shall be monitored and displayed at a convenient location near the main gate of the company in the public domain.</p>	<p>EC compliance report is regularly uploaded on company website www.jswcement.in along with Environment monitoring reports. The Environment monitoring data are also regularly submitted to KSPCB, Regional office Bsiteellary & submitted to Regional office MoEF&CC on six monthly basis along with the compliance reports. Emission monitoring data are displayed at factory main gate of the company in the public domain.</p>
		
ix	<p>The project proponent shall also submit six monthly reports on the status of the compliance of the stipulated environmental conditions including results of monitored data (both in hard copies as well as by-mail) to the Regional, Office of MoEF&CC, the respective Zonal Office of CPCB and the SPCB. The Regional Office of this Ministry at Bangalore/CPCB/SPCB shall monitor the stipulated conditions.</p>	<p>Six monthly compliance reports are regularly submitted to Regional Office in both hard copies as well as through mail. MOEF&CC, Zonal office CPCB and SPCB through mail as per, MOEF&CC Notification S.O.5845(E) dated 26.11.2018.</p>
x	<p>The environmental statement for each financial year ending 31st March in Form-V as is mandated to be submitted by the project proponent to the concerned State Pollution Control Board as prescribed under the Environment (Protection) Rules, 1986, as amended subsequently, shall also be put on the website of the company along with the status of compliance of environmental conditions and shall also be sent to the respective Regional Office of the MOEFCC at Bangalore by e-mail</p>	<p>Last Environment Statement (Form –V) for the year 2021-2022 submitted to KSPCB on 29.09.2023. Environment statement is also uploaded on the company website and also submitted to Regional office MOEFCC at Bangalore through email.</p>
xi	<p>The Project Proponent shall inform the public that the project has been accorded environmental clearance by the Ministry and copies of the clearance letter are available with the SPCB and may also be seen at</p>	<p>Unit have advertised regarding grant of Environmental Clearance in local new papers (Kanada Prabha, Deccan Herald) which are widely circulated in the region</p>

	<p>Website of the Ministry of Environment, Forest and Climate Change (MoEFCC) at http://envfor.nic.in. This shall be advertised within seven days from the date of issue of the clearance letter, at least in two local newspapers that are widely circulated in the region of which one shall be in the vernacular language of the locality concerned and a copy of the same should be forwarded to the regional office at Bangalore.</p>	<p>and copy of the same was submitted to regional office, MOEFCC. Newspaper cutting of the advertisement</p>
--	---	--

<p>ಸಾರ್ವಜನಿಕ ಪ್ರಕಟಣೆ</p> <p>ಪರಿಸರ, ಅರಣ್ಯ ಮತ್ತು ಹವಾಮಾನ ಬದಲಾವಣೆ ಸಚಿವಾಲಯವು ತನ್ನ ಉಲ್ಲೇಖ ಸಂಖ್ಯೆ ನಂ. ಎಫ್. ನಂ. ಐಎ-ಜೆ-11011/540/2017-ಐಎ. II(I) ದಿನಾಂಕ 01.02.2018 4.0 ಎಮ್.ಟಿ.ಪಿ.ಎ. ಸ್ಲಾಕ್ ಗ್ರೈಂಡಿಂಗ್ ಮತ್ತು ಮಿಕ್ಸಿಂಗ್ ಘಟಕ (ಗಳು) 6.2 ಎಮ್.ಟಿ.ಪಿ.ಎ.ಗೆ ವರ್ಗಾಯಿಸಲು ಅನುಮೋದಿಸಿದೆ. ಎಮ್/ಎಸ್. ಜೆ.ಎಸ್. ಡಬ್ಲ್ಯೂ. ಸ್ಟೀಲ್ ಲಿಮಿಟೆಡ್. (ಮೂಲ ಕಂಪನಿ) ಜೆ.ಎಸ್. ಡಬ್ಲ್ಯೂ. ಸಿಮೆಂಟ್ ಲಿಮಿಟೆಡ್. (ಹೊಸ ಕಂಪನಿ). ಎನ್ವಿರಾನ್ಮೆಂಟಲ್ ಕ್ವಿಯರೆನ್ಸ್ ಪ್ರತಿಯನ್ನು ಎಸ್.ಪಿ.ಸಿ.ಬಿ. ಜೊತೆ ಪತ್ರ ಲಭ್ಯವಿರುತ್ತದೆ. ಹಾಗೂ ಪ್ರತಿಯನ್ನು ಪರಿಸರ, ಅರಣ್ಯ ಮತ್ತು ಹವಾಮಾನ ಬದಲಾವಣೆ ಸಚಿವಾಲಯದ ವೆಬ್‌ಸೈಟ್‌ನಲ್ಲೂ ನೋಡಬಹುದು http://envfor.nic.in</p>	<p>PUBLIC NOTICE</p> <p>The Ministry of Environment Forest & Climate change Vide their letter No F.NO.IA- J-11011 /540/2017 -IA-II(I) dt 1.02.2018 have accorded to transfer the Environmental Clearance of 4.0 MTPA Slag Grinding and mixing unit(s) from Environmental Clearance granted to 6.2 MTPA Slag Grinding and Mixing units as a part of Integrated Steel Plant of M/s JSW Steel Limited (parent company) to M/s JSW Cement Limited (new company) (The copy of Environmental clearance letter is available with SPCB and may also be seen at website of the Ministry of Environment Forest & Climate change http://envfor.nic.in</p>
--	--

<p>xii</p>	<p>Project authorities shall inform the Regional Office as well as the Ministry, the date of financial closure and final approval of the project by the concerned authorities and the date of commencing the land development work.</p>	<p>Date of financial closure:31.03.2018 Date of final approval:07.05.2018 Date of commencement of land development work: Nov.2006</p>
<p>xiii</p>	<p>M/s JSW Cement limited shall abide by all the commitments and recommendations made in the EIA/EMP report and that during presentation to the EAC; commitments made during the Public hearing held on 30.12.2010 for Integrated Steel Plant</p>	<p>Unit will abide by all the commitments and recommendations made in the EIA/EMP report and that during presentation to the EAC; commitments made during the Public hearing held on 30.12.2010 for Integrated Steel Plant</p>
<p>xiv</p>	<p>The Ministry may revoke or suspend the clearance, if implementation of any of the above conditions is not satisfactory</p>	<p>Noted and Agreed</p>
<p>xv</p>	<p>The Ministry reserves the right to stipulate additional conditions if found necessary. The Company in a time bound manner shall implement these conditions</p>	<p>Noted and Agreed</p>
<p>xvi</p>	<p>The PP shall ensure no change in the pollution load; and no conflict in sharing in common facilities in day to day operations</p>	<p>Noted and Agreed</p>
<p>xvii</p>	<p>All the liabilities regarding environmental issues of slag grinding unit will be the responsibility of the new company i.e. M/s JSW Cement Limited.</p>	<p>Noted and Agreed</p>
<p>xviii</p>	<p>The above conditions shall be enforced, inter-alia under the provisions of the Water (Prevention & Control of Pollution) Act, 1974, the Air (Prevention & Control of Pollution) Act, 1981, the Environment (Protection) Act, 1986, Hazardous and Other Wastes (Management and Transboundary Movement) Rules,</p>	<p>Noted and Agreed</p>

	2016 and the Public Liability Insurance Act, 1991 along with their amendments and rules.	
xix	This Environmental Clearance is transfer of slag grinding and mixing unit (4.0 MTPA) which was part of Environmental Clearance vide J11011/489/2009-IA,II(I) dated 1 st October 2015 read with amendment in the EC vide letter of even no. dated 09 th June, 2016.	Noted
xx	Any appeal against this EC shall lie with the National Green Tribunal, if preferred, within a period of 30 days as prescribed under Section 16 of the National Green Tribunal Act, 2010.	Noted
xxi	The applicant shall Continue the self-monitoring system for monitoring the effluents and emissions.	Noted and Agreed
xxii	The applicant shall maintain register recording the ambient air quality, stack monitoring and analysis report of treated effluents. The register shall be open for inspection by the board officers at all time.	Unit is maintaining register to record the ambient air quality, stack emission and analysis of treated effluent. Register is open for inspection by board officers at all time.
xxiii	An inspection Book shall be opened and made available to the Board Officers during their visit to the factory	Unit have opened the inspection book and available to Board officials during their visit to factory premises
xxiv	The industry shall transport and store the raw materials in a manner so as not to cause any damage to environment, life and property. The applicant shall be solely responsible for any damages to environment.	Raw materials are stored in covered shed/silos. Tarpaulins are used during transportation of raw materials and finished products.