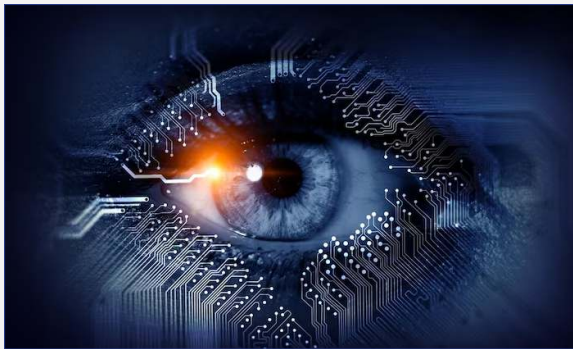




**THE
LEADERS'
CHOICE**

**| MORTAR
| WATERPROOFING
| ADHESIVES & GROUTS**

CONSTRUCTION CHEMICALS BROCHURE



Our Vision

Global recognition for quality and efficiency while nurturing nature and society.



Our Mission

Supporting India's growth in core economic sectors with speed and innovation.



About Us

JSW Cement is part of the diversified US \$23 billion JSW Group. As one of India's leading business houses, JSW Group has other business interests in sectors, such as steel, energy, infrastructure, paints, sports and venture capital. JSW Cement is India's leading green cement company with current capacity of 19 MTPA across manufacturing units at Vijayanagar in Karnataka, Nandyal in Andhra Pradesh, Salboni in West Bengal, Jajpur in Odisha, Dolvi in Maharashtra and Fujairah in UAE, among others. Our subsidiary, Shiva Cement, is currently investing over ₹1,500 crores in a 1.36 MTPA clinker unit project to be established in Sundergarh, Odisha. The project includes setting up a 1 MTPA grinding unit and associated facilities.

CONTENTS

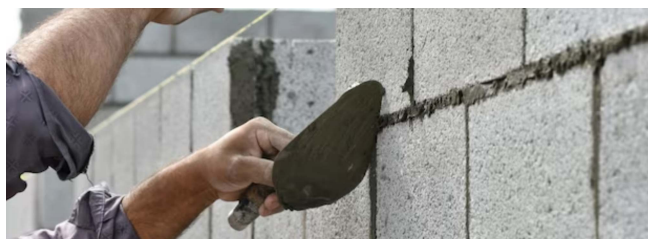


TILE ADHESIVE, GROUT AND CLEANER

JSW TYLFIX TYPE 1	06
JSW TYLFIX TYPE 2	07
JSW TYLFIX TYPE 3	08
JSW TYLFIX TYPE 4	09
JSW TYLFIX GROUT - CEMENTITIOUS	11
TYLFIX CLEANER	13

PRECISION STEEL GROUTS

SG1 FLOWABLE	15
SG2 FLOWABLE	16
SG3 FLOWABLE	17



MORTAR

JSW ENDURO PLAST	19
BLOCK GRIP ADHESIVE	20

WATERPROOFING

SMARTBLOK IWC+200	22
SMARTBLOK SBR ULTRA	23
SMARTBLOK SBR ULTRA PLUS	24
SMARTBLOK UNIVERSAL POLYMER	25
SMARTBLOK CEM 2K ULTRA	26
SMARTBLOK CEM 2K ULTRA PLUS	27



WIDE RANGE OF SOLUTIONS



TILE ADHESIVE, GROUT AND CLEANER

MORTAR



PRECISION STEEL GROUTS

WATERPROOFING



Creating Customized Construction
Solutions for your **Unique Needs...**





**TILE ADHESIVE,
GROUT AND CLEANER**

JSW TYLFIX TYPE 1

TILE ADHESIVE FOR FLOOR & WALL- CERAMIC TILES

AREAS OF APPLICATION

JSW Tyfix Type 1 is a polymer modified cement based powder tile adhesive for fixing all type of ceramic, clay tiles. It is suitable for both vertical and horizontal application. It gives excellent bond on exterior cementitious surfaces like plaster or concrete etc.

FEATURES



Easy to Use



Water Resistant



Better Adhesive
Bond Strength

4 BENEFITS

- Easy to use – Just add water as per recommended W/P ratio on site and ready to use.
- Can be used in internal dry areas, for floor as well as wall application.
- Better adhesive bond strength & Bonds to various cement-based substrates.
- Self-curing properties.

BEST BEFORE

12 months for sealed pack when stored under cover, out of direct sunlight & damp-proof condition.

COVERAGE

- Approx. 5 - 6 m² / 20 kg Bag at 3 mm thickness (using 6 mm x 6 mm notch).
- Coverage will vary depending on trowel notch size, type, tile size and substrate smoothness and evenness.

TECHNICAL SPECIFICATIONS

Properties	Results
Tentative mixing ratio (Powder: Water)	3.5 : 1 by volume; 1 : 0.22 by weight
Mixed density	1.7 - 1.9 kg/ ltr
Table flow	180 mm
Open time (IS 15477 : 2019)	Approx. 20 minutes
Adjustability (IS 15477 : 2019)	Approx. 20 minutes
Pot life	Approx. 60 minutes
Tensile adhesion strength as per IS 15477 : 2019	≥ 0.5 N/ mm ²
Application temperature (substrates & materials)	5°C to 35°C
Adhesive thickness	3 - 12 mm
Setting/ trafficable time	24 hours

PACK SIZE

20 kg





JSW TYLFIX TYPE 2

TILE ADHESIVE FOR FLOOR & WALL & Tile on Tile

AREAS OF APPLICATION

JSW Tyfix Type 2 is a polymer modified cement based powder tile adhesive for fixing All types of ceramic tile, terracotta, pavers, brick vitrified tiles, glass. It is suitable for Flooring and walls, for internal applications & external shaded area, external area, dry & wet area, new construction & renovation, domestic applications, commercial applications.

FEATURES



6 BENEFITS

- Easy to use - just add water on site, ready to use.
- Ideal product for tile-on-tile applications on floor.
- Sag resistant formula: provides hassle-free application on vertical walls.
- Water resistant - suitable for wet areas.
- Good adhesive bond strength & bonds to various cement-based substrates.
- Low VOC - for healthy living.

BEST BEFORE

12 months for sealed pack when stored under cover, out of direct sunlight & damp-proof condition.

COVERAGE

- Approx. 5 - 6 m²/ 20 kg Bag at 3 mm thickness (using 6 mm x 6 mm notch).
- **Coverage will vary depending on trowel notch size, type, tile size and substrate smoothness and evenness.**

TECHNICAL SPECIFICATIONS

Properties	Results
Tentative mixing ratio (Powder: Water)	3.5 : 1 by volume; 1 : 0.22 by weight
Mixed density	1.7 - 1.9 kg/ ltr
Table flow	180 mm
Open time (IS 15477 : 2019)	Approx. 20 minutes
Adjustability (IS 15477 : 2019)	Approx. 20 minutes
Pot life	Approx. 120 minutes
Tensile adhesion strength as per IS15477 : 2019	≥ 0.5 N/ mm ²
Application temperature (substrates & materials)	5°C to 35°C
Adhesive thickness	3 - 12 mm
Setting/ trafficable time	24 hours

PACK SIZE

20 kg



JSW TYLFIX TYPE 3

TILE ADHESIVE FOR GLASS & STONE TILES

AREAS OF APPLICATION

JSW Tylfix Type 3 is a polymer modified cement based powder tile adhesive for fixing All types of ceramic tiles, clay tiles, basalt tiles, terracotta, pavers, brick, vitrified tiles, glass mosaic tiles, porcelain tiles and all natural stone tiles. It is suitable for Flooring and walls, for internal applications & external shaded area, external area, dry & wet area, new construction & renovation, domestic applications, commercial applications.

FEATURES



Sag Resistant



Water Resistant



Better Adhesive
Bond Strength

7 BENEFITS

- Easy to use - just add water on site, ready to use.
- Ideal product for tiles and stone tiles on exterior wall substrates like plaster or concrete.
- Highly polymer modified – provides high adhesion strength to bond with variety of substrates for fixing a variety of tiles and stones.
- Sag resistant formula: provides hassle-free application on vertical walls.
- Water resistant - suitable for wet areas.
- Sustain heat ageing, making it ideal for high temperature locations.
- Low VOC - for healthy living

COVERAGE

- Approx. 5 - 6 m² / 20 kg Bag at 3 mm thickness (using 6 mm x 6 mm notch).
- Approx. 2.5 - 3 m² / 20 kg Bag at 6 mm thickness (using 12 mm x 12 mm notch).
- **Coverage will vary depending on trowel notch size, type, size of tile and substrate smoothness and evenness**

TECHNICAL SPECIFICATIONS

Properties	Results
Tentative mixing ratio (Powder: Water) Grey	3.5 : 1 by volume; 1 : 0.22 by weight
Mixed density	1.8 - 2.0 kg/ ltr
Table flow	180 mm
Open time (IS 15477 : 2019)	Approx. 30 minutes
Adjustability (IS 15477 : 2019)	Approx. 25 minutes
Pot life	Approx. 120 minutes
Tensile adhesion strength as per IS 15477 : 2019	≥ 1.5 N/ mm ²
Application temperature (substrates & materials)	5°C to 35°C
Adhesive thickness	3 - 12 mm
Setting/ trafficable time	24 hours

BEST BEFORE

12 months for sealed pack when stored under cover, out of direct sunlight & damp-proof condition.

PACK SIZE

20 kg





JSW TYLFIX TYPE 4

TILE ADHESIVE FOR LARGE GLASS & STONE TILES AND DRY WALL BOARDS

AREAS OF APPLICATION

JSW Tyfix Type 4 All types of ceramic tiles, clay tiles, basalt tiles, terracotta, pavers, brick, vitrified tiles, glass mosaic tiles, porcelain tiles, natural stone tiles, large format tiles, marble, large thin/slim tiles, low thickness slabs. It is suitable for Flooring and walls, for internal applications & external area, dry & wet area, fountains and swimming pool, new construction & renovation, domestic applications, commercial applications.

FEATURES



Heat Ageing



Water Resistant



Better Adhesive
Bond Strength

5 BENEFITS

- Easy to use - just add water on site, ready to use.
- Ideal product for tiles and stone tiles on exterior wall substrates like plaster or concrete.
- Highly polymer modified – provides high adhesion strength to bond with variety of substrates for fixing a variety of tiles and stones.
- Sag resistant formula: provides hassle-free application on vertical walls.
- Sustain heat ageing, making it ideal for high temperature locations.

COVERAGE

- Approx. 5 - 6 m² / 20 kg Bag at 3 mm thickness (using 6 mm x 6 mm notch).
- Approx. 2.5 - 3 m² / 20 kg Bag at 6 mm thickness (using 12 mm x 12 mm notch).
- **Coverage will vary depending on trowel notch size, type, size of tile and substrate smoothness and evenness.**

TECHNICAL SPECIFICATIONS

Properties	Results
Tentative mixing ratio (Powder: Water)	3.5 : 1 by volume; 1 : 0.22 by weight
Mixed density	1.8 – 2.0 kg/ ltr
Table flow	Max 190 mm
Open time (IS 15477 : 2019)	Approx. 40 minutes
Adjustability (IS 15477 : 2019)	Approx. 30 minutes
Pot life	Approx. 120 minutes
Tensile adhesion strength as per IS 15477 : 2019	≥ 1.5 N/mm ²
Application temperature (substrates & materials)	5°C to 35°C
Adhesive thickness	3 - 12 mm
Setting/ trafficable time	24 hours

BEST BEFORE

12 months for sealed pack when stored under cover, out of direct sunlight & damp-proof condition.

PACK SIZE

20 kg



TYLFIX GROUT - Cementitious

CEMENT-BASED TILE JOINT FILLER GROUT

AREAS OF APPLICATION

Tylfix Grout-Cementitious is a polymer-modified, cement-based tile joint filler grouting material, which is highly suitable for filling the joints/gap of all types of tiles. It exhibits water-resistant properties, making it an ideal choice for various applications.

FEATURES



Non Shrink



Crack Free



Easily Pourable

4 BENEFITS

- Easy to use & Clean: just mix with water, ready to use
- Polymer modified: crack-free, minimum shrinkage & water resistance
- Suitable for varied tile and stones: All ceramics, vitrified tiles, granites, etc.
- Low VOC: For healthy living.

BEST BEFORE

- 12 months for sealed pack when stored under cover, out of direct sunlight, damp-proof condition and protect from extremes of temperature
- Should be in a dry and covered area.

COVERAGE

- Coverage would dependent upon porosity & contamination of substrate.

SHADES

- *Available in Multi Smart Colours.

TECHNICAL SPECIFICATIONS

Properties	Results
Component Appearance	Cementitious Coloured Powder
Tentative Mixing Ratio	1 kg JSW Tylfix Grout : 0.33-0.40 kg Water
(JSW Tylfix Grout : Water)	(2.5-3 : 1 by weight)
Mixed Density	1.40 – 1.80 kg/ltr
Pot Life @ 27+20°C Min.	45 minutes
Joint Width	Up to 3 mm
Application Temperature	10°C to 35°C
Light Foot Traffic	24 hours
Regular Traffic	7 Days
Final Curing Time	28 days

PACK SIZE

1 kg





TYLFIX CLEANER

STRONG PERFORMANCE CLEANER

AREAS OF APPLICATION

Tylfix Cleaner is a strong performance rapid active cleaner and degreasing solution for use on tiles, bathtubs, wash basin, privy basin and concrete etc. It is used to clean whitish spot/ layer as normally observed in the bathroom under plastic/ metal buckets (normal detergent is not helpful) with ease.

FEATURES



Easy Cleaning



No Residual Mark



Cleans all types
of Tiles

6 BENEFITS

- Easy to use: Just mix with water & clean the surface.
- Removes difficult stains easily: Fast & effective.
- Degreases the tile surface easily for soaps, scum, efflorescence, mineral deposit.
- Cleans all types of tile like ceramic, porcelain & vitrified tile and grout.
- Protects the color & shine of tile.
- Does not damage joints between ceramic tiles, even those grouted with colored products.

BEST BEFORE

- 12 months for sealed pack when stored under cover, out of direct sunlight & damp-proof condition.

COVERAGE

- Coverage would dependent upon porosity & contamination of substrate.

TECHNICAL SPECIFICATIONS

Properties	Results
Appearance	Reddish color liquid
Density	1.02 0.02 kg/ltr
Viscosity	Equal to water
Soaking time	5 minutes
Dilution with water	Depend upon substrate condition & stain severity

PACK SIZE

1 Ltr

5 Ltr





PRECISION STEEL GROUTS



SG 1 FLOWABLE

HIGH PERFORMANCE & HIGH STRENGTH GROUT

AREAS OF APPLICATION

JSW Steel Grout SG 1 is a cementitious flow-able non shrink high strength grout for precision application like repair RCC Structures heavy machinery foundations etc.

FEATURES



Highly Flowable



Non shrink
Non Expansive



High Strength

8 BENEFITS

- High early strength and highly flow able
- Highly Durable
- Non Expansive
- Non Shrink
- High Compressive, flexural & Tensile Strength
- Early loading
- Self-Compacting
- High Bond Strength

BEST BEFORE

6 months from the date of manufacturing if stored in unopened original packing, under shaded area in dry and moisture free conditions

COVERAGE & CLASS

- Yield about 11 litre per 25 kg bag
- 100 MPa Grout complying to ASTM C 1107/1107M: 20 & CRD-C-621-83

TECHNICAL SPECIFICATIONS

Properties	Results
Appearance	Free Flowing Powder
Color	Cementitious Grey
Water/ Powder Ratio	0.11 – 0.13
Flow on Table @ 30°C in mm	Min. 260 mm
Fresh Wet Density, Kg/m ³	2200 – 2400
Initial Setting Time, Minutes	> 200
Final Setting Time, Minutes	< 600
Pot Life @ 30°C	45 – 60 minutes

PACK SIZE

25 Kg



SG 2 FLOWABLE

HIGH PERFORMANCE GROUT

AREAS OF APPLICATION

JSW Steel Grout SG 2 is a cementitious highly flow-able non shrink high strength grout for precision application like repair RCC Structures, heavy machinery foundations etc.

FEATURES



Non-shrink Grout



Self-compactable



High Durability

8 BENEFITS

- High early strength and highly flow able
- Highly Durable
- Non Expansive
- Non Shrink
- High Compressive, flexural & Tensile Strength
- Early loading
- Self-Compacting
- High Bond Strength

BEST BEFORE

6 months from the date of manufacturing if stored in unopened original packing, under shaded area in dry and moisture free conditions.

COVERAGE & CLASS

- Yield about 11 litre per 25 kg bag
- 80 MPa Grout complying to ASTM C 1107/1107M: 20 & CRD-C-621-83

TECHNICAL SPECIFICATIONS

Properties	Results
Appearance	Free Flowing Powder
Color	Cementitious Grey
Water/ Powder Ratio	0.13 – 0.15
Flow on Table @ 30°C in mm	Min. 260 mm
Fresh Wet Density, Kg/m ³	2200 – 2400
Initial Setting Time, Minutes	> 200
Final Setting Time, Minutes	< 600
Pot Life @ 30°C	45 – 60 minutes

PACK SIZE

25 Kg





SG 3 FLOWABLE

GENERAL PURPOSE PRECISION GROUT

AREAS OF APPLICATION

JSW Steel Grout SG 3 is a cementitious highly flow-able non shrink high strength grout for precision application like repair RCC Structures, heavy machinery foundations etc.

FEATURES



Non-shrink Grout



Self-compactable



High Durability

8 BENEFITS

- High early strength and highly flow able
- Highly Durable
- Non Expansive
- Non Shrink
- High Compressive, flexural & Tensile Strength
- Early loading
- Self-Compacting
- High Bond Strength

BEST BEFORE

6 months from the date of manufacturing if stored in unopened original packing, under shaded area in dry and moisture free conditions.

COVERAGE & CLASS

- Yield about 11 litre per 25 kg bag
- 60 MPa Grout complying to ASTM C 1107/1107M: 20 & CRD-C-621-83

TECHNICAL SPECIFICATIONS

Properties	Results
Appearance	Free Flowing Powder
Color	Cementitious Grey
Water/ Powder Ratio	0.13 – 0.15
Flow on Table @ 30°C in mm	Min. 260 mm
Fresh Wet Density, Kg/m3	2200 – 2400
Initial Setting Time, Minutes	> 200
Final Setting Time, Minutes	< 600
Pot Life @ 30°C	45 – 60 minutes

PACK SIZE

25 Kg





MORTAR

ENDURO PLAST

READY MIX PLASTER

AREAS OF APPLICATION

Single component rendering mortar with a ratio of graded inert sand with cement and polymers for applications in civil construction works.

FEATURES



For Ceilings



For Walls

12 BENEFITS

- Cohesive & workable mortar
- Less water consumption
- Increased Curing efficiency
- Improves bond strength with applied substrate
- Reduce Rebound losses
- Better tensile and flexural strength
- Increase in durability
- Faster rate of application
- Extended application time
- Uniform and smooth finishes
- Reduces wall porosity & voids
- Provides enhanced coverage and saves material

BEST BEFORE

6 months from date of manufacturing, when stored in a dry & sealed condition.

COVERAGE

- **For Walls** - In w/p ratio of 0.14-0.16 to provide thickness of 5-20 mm, at a coverage of 0.175 TO 0.20 Kg/sqft/mm.
- **For Ceilings** - In w/p ratio of 0.14-0.16 to provide thickness of 5-20 mm, at a coverage of 0.175 to 0.20 Kg/sqft/mm.
- **Water Demand** - 6.0 - 7.0 ltrs for 40 Kg

TECHNICAL SPECIFICATIONS

Properties	Results
Pot life at 30°C min	90-120
Compressive Strength at 28 days, Mpa	6-8
Tensile Strength at 28 days, Mpa	Min.1.0
Flexural Strength at 28 days, Mpa	Min.1.5
Water Absorption%	Max 5
Rebound Loss %	Max 2

PACK SIZE

40 Kg



BLOCK GRIP ADHESIVE

EXCELLENT ADHESIVE FOR CURED BLOCKS

AREAS OF APPLICATION

It's a single-component thixotropic thin-bed fixing and jointing block grip adhesive. It contains an aggregate ratio of graded inert sand with cement and polymers for applications as a bond-gripping material in civil construction works. It is recommended for fixing and jointing AAC blocks, ALC blocks, Cement mortar blocks, Cellular concrete blocks, Fly ash bricks and Composite cement blocks.

FEATURES



9 BENEFITS

- Cohesive & workable mortar
- High tensile & flexural with strong bonding
- Consistent spread for faster rate of application
- Uniform and smooth joint finishes
- Reduced surface porosity & voids
- Better coverage
- Self curing
- Shock and impact resistance
- Resists water seepage

BEST BEFORE

12 months for sealed pack when stored in dry and sheltered area; kept out of direct sunlight, damp-proof conditions.

COVERAGE

- Approx 5.0 – 6.0 m² / 40 kg Bag at 3mm thickness (using 3 mm x 3 mm notch)

TECHNICAL SPECIFICATIONS

Properties	Results
Pot life @ 30°C	120 minutes
Compressive strength @ 28 days, Mpa	8–10 MPa after 28 days
Tensile splitting strength	0.45 to 0.6 MPa for 3 mm–6 mm @ 28 days valid for 90% transfer
Fresh wet density (gm/cc)	1.65–1.75 gm/cc
Bulk Density	1.15–1.25 gm/cc
pH of mix	10–12
Workability of mix (hours)	Approx. 2hrs-3hrs
Water Demand	0.25 - 0.27

PACK SIZE

40 Kg





WATERPROOFING

SMARTBLOK IWC+200

INTEGRAL WATERPROOFING COMPOUND SUITABLE FOR ALL TYPES OF CONCRETE & MORTAR



AREAS OF APPLICATION

JSW Smart Blok IWC+ 200 is an Integral liquid waterproofing compound composed of surface active plasticizers, polymers and additives. It reduces the water demand (6-8% reduction) with the required work-ability in mortar and concrete.

FEATURES



Enhanced Integral Waterproofing Compound.



Portland and all type of Blended Cement compatible.



Improve Concrete & Mortar strength.

8 BENEFITS

- **Workability:** Improves workability and cohesiveness of the mortar and concrete.
- **Anti Bleeding:** Reduces bleeding and segregation in mortar and concrete.
- **Compatibility:** Being liquid, easily dispersible and compatible with mortar/concrete mixes.
- **Low Permeability:** It reduces water penetration in mortar and concrete.
- **Durability:** Improves durability due to reduction in permeability in concrete (by improving cohesiveness in concrete) and hence protects steel against corrosion in a better way.
- **Shrinkage:** Reduces shrinkage crack development in plaster and concrete.

BEST BEFORE

24 months for sealed pack when stored in dry and under cover, Store out of direct sunlight & damp-proof condition.

TECHNICAL SPECIFICATIONS

Description	Test Method	Results
Appearance	Visual	Free flowing liq.
Color	Visual	Dark brown
Sp. Gravity @ 27°C	-	1.08 – 1.13
Non volatile content	-	23 ± 1
pH	-	7- 9
Setting time, min	IS 2645 : 2003	Passes
Water permeability	IS 2645 : 2003	Passes
Compressive strength N/mm ²	IS 2645 : 2003	As per standard
Chloride content	IS 2645 : 2003	0.02%

DOSAGE

- 200 ml per 50kg bag of cement
- Site trials shall be carried out to validate the optimum dosage.

PACK SIZE

1 litre
5 litres
10 litres
20 litres





SMARTBLOK SBR ULTRA

ECO-FRIENDLY MULTIPURPOSE SBR POLYMER FOR WATER PROOFING & REPAIR

AREAS OF APPLICATION

JSW SmartBlok SBR Ultra is a selective eco-friendly styrene butadiene latex based polymeric material. This is ready to use for multi-purpose water proofing applications at leakage and seepage prone locations of new constructions including bathroom, toilet, water tank, small terraces etc.

FEATURES



Performance Modifier & Bonding Agent for Old to New (Mortar, Concrete).



Shrink Proof, Crack Resist, in Proof bond strength



Waterproofing Flexible Coating

5 BENEFITS

- **Crack prevention:** The improved flexural strength prevents the crack generation.
- **Hardness:** It improves the surface hardness and prevents dust generation
- **Shrinkage:** It reduces the drying shrinkages.
- **Bonding:** It provides improved bonding for concrete & mortar for new construction as well as repair works.
- **Erosion & Corrosion:** The reduces Erosion and Corrosion.

BEST BEFORE

- 12 months from the date of manufacturing.
- Store in cool and dry place in unopened condition. Prevent from direct sunlight

TECHNICAL SPECIFICATIONS

Description	Results
Nature/Appearance	Milky white liquid with translucence
Material type	Modified eco-friendly SBR latex
Smell	Characteristic sweet smell
pH	7-8
Total Active Content (by mass)	38±1 %
Specific Gravity at 25 °C	1.0-1.05

COVERAGE

- **Water Proofing:** Min 7-8 Sq.ft/Kg of Slurry for 2 coats
- **Bond Coat:** 20-21 Sq.ft/Kg of slurry for 1 coat

PACK SIZE

1 kg
5 kg
10 kg
20 kg



SMARTBLOK SBR ULTRA PLUS

ECO-FRIENDLY MULTIPURPOSE HIGH PERFORMANCE SBR POLYMER FOR WATER PROOFING & REPAIR



AREAS OF APPLICATION

JSW SmartBlok Ultra PLUS is a selective eco-friendly styrene butadiene latex based high performance polymeric material. This is ready to use for multi-purpose water proofing applications at leakage and seepage prone locations of new constructions including bathroom, toilet, water tank, small terraces etc.

FEATURES



Multipurpose Admixture & Bonding Agent for Old to New (Mortar, Concrete).



High Performance bond strength. Watertight masonry jointing



Versatile - Compatible with all common hydraulic cements.

6 BENEFITS

- **Crack prevention:** The improved flexural strength prevents the crack generation.
- **Hardness:** It improves the surface hardness and prevents dust generation
- **Shrinkage:** It reduces the drying shrinkages.
- **Bonding:** It provides improved bonding for concrete & mortar for new construction as well as repair works.
- **Erosion & Corrosion:** The reduces Erosion and Corrosion.
- **Eco-Friendly:** Made using natural materials & ingredients

BEST BEFORE

- 12 months from the date of manufacturing.
- Store in cool and dry place in unopened condition. Prevent from direct sunlight

TECHNICAL SPECIFICATIONS

Description	Results
Nature/Appearance	Milky white liquid with translucence
Material type	Modified eco-friendly SBR latex
Smell	Characteristic sweet smell
pH	7-8
Total Active Content (by mass)	43±1 %
Specific Gravity at 25 °C	1-1.05

COVERAGE

- **Water Proofing:** Min 7-8 Sq.ft/Kg of Slurry for 2 coats
- **Bond Coat:** 20-21 Sq.ft/Kg of slurry for 1 coat

PACK SIZE

1 kg
5 kg
20 kg





SMARTBLOK UNIVERSAL POLYMER

WEATHERPROOF HIGH PERFORMANCE ACRYLIC POLYMER FOR WATERPROOFING & REPAIR APPLICATION

AREAS OF APPLICATION

JSW SmartBlok Universal Polymer is a modified acrylic emulsion based material. This material is specially designed for exterior water proofing. Addition of this material provides improved adhesion at old to new concrete and plaster. It is a universal bonding material for concrete and masonry repair.

FEATURES



Superior Performance bond strength. Shrink Reducer.



Good Crack Bridging Strength, abrasion resistance properties



Waterproofing Flexible Coating

6 BENEFITS

- **Crack prevention:** The improved flexural strength prevents the crack generation.
- **Hardness:** It improves the surface hardness and prevents dust generation
- **Shrinkage:** It reduces the drying shrinkages.
- **Bonding:** It provides improved bonding for concrete & mortar for new construction as well as repair works.
- **Erosion & Corrosion:** This reduces erosion and corrosion.
- **Flexible Coating:** This provides a flexible coating for exterior and interior application

BEST BEFORE

- 12 months from the date of manufacturing.
- Store in cool and dry place in unopened condition. Prevent from direct sunlight.

TECHNICAL SPECIFICATIONS

Description	Results
Nature/Appearance	Milky white liquid with translucence
Material type	Modified Acrylic
pH	7-8
Total Active Content (by mass)	34±1 %
Specific Gravity at 25 °C	1-1.05

COVERAGE

- **Water Proofing:** Min 7-8 Sq.ft/Kg of Slurry for 2 coats
- **Bond Coat:** 20-21 Sq.ft/Kg of slurry for 1 coat

PACK SIZE

1 kg
5 kg
10 kg
20 kg



SMARTBLOK CEM 2K ULTRA

High Performance Acrylic Cementitious Waterproofing Coating



AREAS OF APPLICATION

JSW SmartBlok Acrycem 2K is a two-component water proofing product, based on acrylic and cementitious materials. It forms an excellent flexible film coating on the concrete and mortar substrate, that provides superior water proofing

FEATURES



Anti Efflorescence



Good Crack Bridging Ability



Excellent Adhesion

4 BENEFITS

- **Flexible Film:** It forms flexible film coating that accommodates cracks and provide better hiding on the surface.
- **Water Resistance:** It provides excellent resistance to water uptake.
- **Adhesion:** It exhibits superior adhesion to concrete and masonry surfaces.
- **Eco-Friendly:** It is composed of eco-friendly materials with low VOC.

BEST BEFORE

- 12 months from the date of manufacturing.
- Store in cool and dry place in unopened condition. Prevent from direct sunlight.

TECHNICAL SPECIFICATIONS

Description	Results
Nature/Appearance	Two component (1 part liq. Polymer + 2 part powder)
Appearance	Liquid Part: Milky White Powder: Grey
Wet mix slurry density	1.5-1.6 g/cc
pH of slurry	9-11
Pot life of the Mix at 30 °C	Minimum 45 min.
Elongation at break of dry film	Minimum 60%

COVERAGE

- 7-8 Sq.ft/Kg for 2 Coats
- **Coverage area will vary depending upon the Substrate undulations & porosity.**

PACK SIZE

15 kg

30 Kg





SMARTBLOK CEM 2K ULTRA PLUS

Superior Performance Acrylic Cementitious Waterproofing Coating

AREAS OF APPLICATION

JSW SmartBlok Cem 2K Ultra Plus is a modified polymer and cementitious hybrid Superior performance, ultra-flexible two-part water proofing coat.

FEATURES



Anti Efflorescence



Good Crack Bridging Ability



Excellent Adhesion

4 BENEFITS

- **Water Blocking:** It creates a water impermeable film coat, adhered on the cementitious substrates. This covers all the cracks and pin-holes and water passages to ensure ultimate resistance towards water seepage.
- **Ultra-Flexibility:** The formed film possesses excellent flexibility. This ensure better crack-bridging ability.
- **Adhesion:** It exhibits excellent adhesion on old/new concrete, mortar and other masonry surfaces.
- **Eco-friendly:** It is composed of eco-friendly materials with low VOC. This makes it application-friendly and eco-friendly.

BEST BEFORE

- 12 months from the date of manufacturing.
- Store in cool and dry place in unopened condition. Prevent from direct sunlight.

TECHNICAL SPECIFICATIONS

Description	Results
Nature/Appearance	Two component (1 part liq. Polymer + 1.4 part powder)
Appearance	Liquid Part: Milky White Powder: Grey powder
Wet mix slurry density	1.5-1.6 g/cc
pH of slurry	9-11
Pot life of the Mix at 30 °C	Minimum 45 min.
Elongation at break of dry film	Minimum 130%

COVERAGE

- 7-8 Sq.ft/Kg for 2 Coats
- **Coverage will vary depending upon the Substrate undulations & porosity.**

PACK SIZE

12 Kg

24 Kg



OUR PRODUCTS **AT GLANCE**



TILE ADHESIVE, GROUT AND CLEANER

JSW TYLFIX TYPE 1 | JSW TYLFIX TYPE 2 | JSW TYLFIX TYPE 3
JSW TYLFIX TYPE 4 | JSW TYLFIX GROUT - CEMENTITIOUS
TYLFIX CLEANER



PRECISION STEEL GROUTS

SG1 FLOWABLE | SG2 FLOWABLE
SG3 FLOWABLE



MORTAR

JSW ENDURO PLAST | BLOCK GRIP ADHESIVE



WATERPROOFING

SMARTBLOK IWC+200 | SMARTBLOK SBR ULTRA
SMARTBLOK SBR ULTRA PLUS | SMARTBLOK UNIVERSAL POLYMER
SMARTBLOK CEM 2K ULTRA | SMARTBLOK CEM 2K ULTRA PLUS

Taking Care of You, Every Step of the Way....



World's **#1**
eco-friendly
cement company 



REGISTERED OFFICE

JSW Centre, Bandra Kurla Complex, Near MMRDA Grounds, Bandra East, Mumbai 400 051

MARKETED BY:

JSW Green Cement Pvt. Ltd. Babukhan Millenium, Centre, 6-3-1099/1100, No. 702,
Block-A, Somajiguda, Hyderabad, Telangana, India, Pincode - 500 082

Email: info@jswcement.in | **Website:** www.jswcement.in | **Toll free:** 1800 266 266 1

SCAN HERE

