



TILE ADHESIVE, GROUT AND CLEANER



Features



Easy to Use



Water Resistant



Better Adhesive
Bond Strength

JSW TYLFIX TYPE 1

Tile Adhesive for Floor & Wall - Ceramic Tiles

AREAS OF APPLICATION

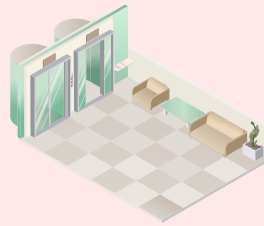
JSW Tylfix Type 1 is a polymer modified cement based powder tile adhesive for fixing all type of ceramic, clay tiles, It is suitable for both vertical and horizontal application. It gives excellent bond on interior cementitious surfaces like plaster or concrete etc.



Kitchen



Bathroom & Toilet



Commercial & Residential



Canteen & Pantry

4 BENEFITS

- Easy to use – Easily add water as per recommended W/P ratio on site and ready to use.
- Can be used in internal dry areas, for floor as well as wall application.
- Better adhesive bond strength & Bonds to various cement-based substrates.
- Self-curing properties.

BEST BEFORE

12 months for sealed pack when stored under cover, out of direct sunlight, dampproof condition.

COVERAGE & CLASS

- Approx. 5 - 6 m² / 20 kg Bag at 3 mm thickness (using 6 mm x 6 mm notch)
- ***Coverage will vary depending on trowel notch size, type, tile size and substrate smoothness and evenness.**

STANDARD COMPLIANCES

- **IS: 15477:2019 TYPE 1 'T'**

TECHNICAL SPECIFICATIONS

Properties	Results
Tentative mixing ratio (Powder: Water)	3.5 : 1 by volume; 1 : 0.22 by weight
Mixed density	1.7 - 1.9 kg/ ltr
Table flow	180 mm
Open time (IS 15477 : 2019)	Approx. 20 minutes
Adjustability (IS 15477 : 2019)	Approx. 20 minutes
Pot life	Approx. 60 minutes
Tensile adhesion strength as per Is15477 : 2019	≥ 0.5 N/ mm ²
Application temperature (substrates & materials)	5°C to 35°C
Adhesive thickness	3 - 12 mm
Setting/ trafficable time	24 hours

PACK SIZE

20 kg



World's No.1 Eco Friendly Cement Company

MARKETED BY: JSW Green Cement Pvt. Ltd.
Babukhan Millenium Centre, 6-3-1099/1100, No. 702, Block-A, Somajiguda, Hyderabad, Telangana, India, Pincode - 500 082.

Email: info@jswcement.in | Website: www.jswcement.in | Toll free - 18002662661



JSW TYLFIX TYPE 1

TILE ADHESIVE, GROUT & CLEANER